

# FRESNELS LED



## PRODUCT DESCRIPTION

- High power led 150W CRI ≥ 95.
- Colour temperature 5600K° or 3200K°.
- Full Flicker Free.
- Power requirements 110V-240V 50/60Hz.
- Control method: DMX or Local (manual) dimming.
- Powercom for power daisy chain.
- Fresnel lens Ø 150mm.

## FRESNEL LED STUDIO 150W MODEL 53-22/N



Beam Angle  
45° - 15°



DMX



Manual Control



5600K° or 3200K°



Inside

## ACCESSORIES FRESNEL LED STUDIO 150W



Barndoor  
8-leaf



Colour conversion &  
Diffusion filter frame

## SUPPLIED WITH

- Barndoor 8-leaf.
- Colour frame.
- Safety grid.
- 2 m power supply cable.



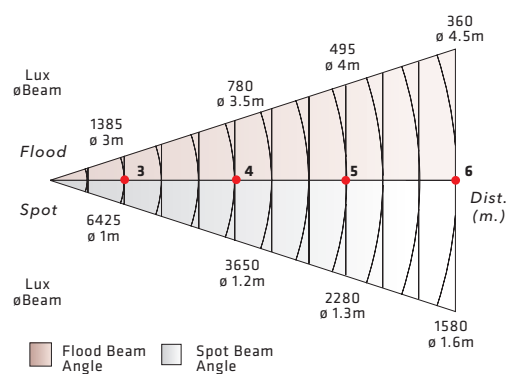
Supplied with connectors  
for  
Power & DMX Daisy Chain



W-DMX  
Optional

## PHOTOMETRIC DATA

FRESNEL LED STUDIO 150W - MODEL 53-22/N

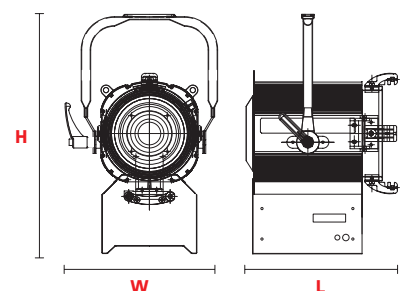


∆p 453mm  
x: 0,3123 y: 0,3172

## DIMENSIONS

FRESNEL LED STUDIO 150W MODEL 53-22/N

- L** 301mm (11.85")
- W** 305mm (12.00")
- H** 480mm (18.89")



POLE OPERATED VERSION AVAILABLE